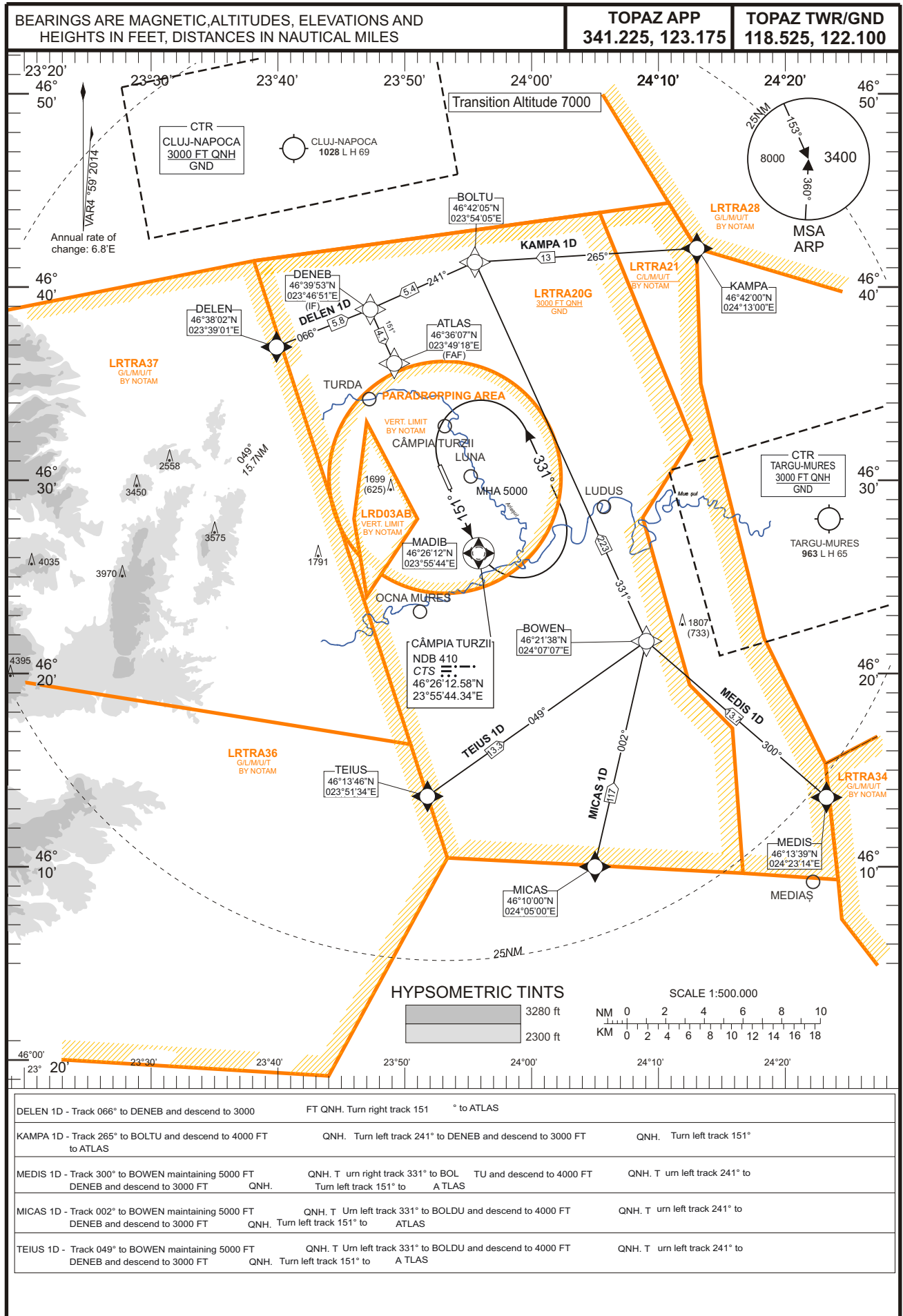


**RNAV^(GNSS) STANDARD ARRIVAL
CHART - INSTRUMENT**

**CÂMPIA TURZII (LRCT)
RWY 15**

DELEN 1D, KAMPA 1D, MEDIS 1D, MICAS 1D, TEIUS 1D



COORDINATES		
ATLAS (FAF)	463607N	0234918E
BOLTU	464205N	0235405E
BOWEN	462138N	0240707E
DELEN	463802N	0233901E
DENEB (IF)	463953N	0234651E
KAMPA	464200N	0241300E
MADIB	462612N	0235544E
MEDIS	461339N	0242314E
MICAS	461000N	0240500E
TEIUS	461346N	0235134E

RADIO COMMUNICATION FAILURE

- a. If a STAR was previously assigned, set transponder 7600 and proceed according to assigned STAR. Follow instrument approach procedure RNAV RWY15 for landing.
- b. If vectoring was initiated, set transponder 7600 and continue on assigned heading and last cleared altitude for 1 minute. Proceed directly to DENEB, then FAF. Follow instrument approach procedure RNAV RWY15 for landing.
- c. If a STAR was not assigned, set transponder 7600 and proceed according to FPL STAR. Follow instrument approach procedure RNAV RWY15 for landing.

Descending shall be executed in accordance with vertical restrictions specified in charts.

LRCT RNAV ARRIVAL SEQUENCE RWY15					
LEG	TYPE OF LEG	DISTANCE (NM)	MAGNETIC HEADING	SPEED (KTS)	ALTITUDE (FT)
KAMPA 1D					
KAMPA - BOLDU	TF	13	265	-270	4000
BOLDU - DENEK	TF	5.4	241	-270	3000
DENEK - ATLAS	TF	4.1	151	-250	3000
MEDIS 1D					
MEDIS - BOWEN	TF	13.7	300	-270	5000
BOWEN - BOLTU	TF	22.3	331	-270	4000
BOLTU - DENEK	TF	5.4	241	-270	3000
DENEK - ATLAS	TF	4.1	151	-250	3000
MICAS 1D					
MICAS - BOWEN	TF	11.7	002	-270	5000
BOWEN - BOLTU	TF	22.3	331	-270	4000
BOLTU - DENEK	TF	5.4	241	-270	3000
DENEK - ATLAS	TF	4.1	151	-250	3000
TEIUS 1D					
TEIUS - BOWEN	TF	13.3	049	-270	5000
BOWEN - BOLTU	TF	22.3	331	-270	4000
BOLTU - DENEK	TF	5.4	241	-270	3000
DENEK - ATLAS	TF	4.1	151	-250	3000
DELEN 1D					
DELEN - DENEK	TF	5.8	066	-270	3000
DENEK - ATLAS	TF	4.1	151	-250	3000